

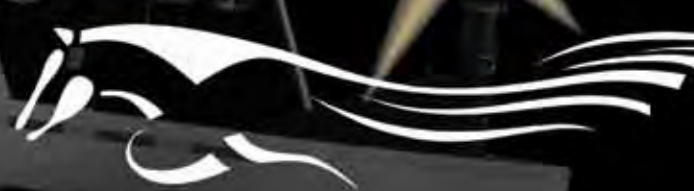


MER-HOW



EQUISTAR

Serving the Equestrian Community
Over 50 Years



EQUIS



*Optional Equipment Shown.

The Equistar XL 2 horse walk thru dressing room gooseneck is 82" wide and features 90" stalls. The XL trailer is designed for customers with larger horses. For more than 50 years, Merhow Industries has been providing the equine market with outstanding, long-lasting trailers. Go ahead and kick the tires, we do! Ask your Merhow dealer about specific standards and options.

Merhow's Equistar is constructed with a strong steel frame, a smooth aluminum exterior, aluminum roof bows, aluminum dividers, aluminum rear hoop and a one-piece aluminum roof. Equistar combines the rugged durability of a steel frame with the low maintenance of aluminum.



Above is the Equistar 3 horse slant load bumper pull shown with standard drop down feed windows. The baked on enamel skin is secured with 3M two-face tape that provides a clean, smooth aerodynamic appearance. (Shown without standard escape door)



*Optional Equipment Shown.

Equistar's 2 horse straight load walk thru dressing room bumper pull XL, is designed to haul the big boy horses. Shown with available mill finish aluminum skin at stall area, nose windows, graphic package and other optional features.

Merhow helps you customize the living quarter to fit your needs and comfort.



See Standards and Options Pages for All Features Included.





M-ARMOR 8-Year Warranty



One-piece aluminum roof with self-leveling adhesive that stays pliable and does not dry out.



Large drop down windows with bars and center latches keep horses safe and cool during travel.



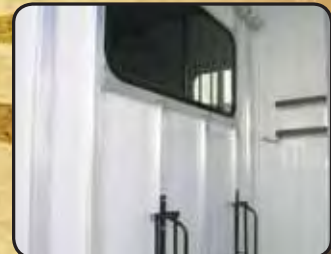
Stall dividers are made from one-piece rounded aluminum tube with safe and smooth corners.



All ramp and tail doors feature a ramp hinge cover that makes loading much safer and keeps the springs clean.



8" tall padded breast doors with hands-free slam latches are standard on straight load trailers.



Optional bulkhead window offers additional ventilation for your horse's comfort while traveling.



All ramp and tail doors feature additional cam latch tie backs for quick and secure holds.



The jack post is located at the rear of the A-Frame which limits the possibility of damage to the vehicle's tailgate.



Undercoated steel chassis provides years of trouble-free maintenance.



Slant loads feature 60/40 rear doors, collapsible, removable rear tack wall and a detachable saddle tree.



Ramp and tail doors with cam latches allow doors to open and close easier.



Optional nose windows provide additional light and ventilation.

EQUISTAR

EQUISTAR STANDARD CONSTRUCTION

8 Year Warranty
All Aluminum with Steel Frame & Cage Construction
Tubular Aluminum Roof Bows & Rear Hoop
One-Piece Aluminum Roof
Cast Aluminum Front Corner Caps with Logo
White Baked On Enamel Skin Fastened with 3M Two-Face Tape
LED Lights
Truck Bed Liner is Applied to All Exposed Steel Chassis Components
Chassis Completely Undercoated
Treated Wood Plank Floor
Jack Moved To Rear of A-Frame – Bumper Pulls
Front Rock Guard – Bumper Pulls
Nev-R-Lube Hubs (E-Z Lube Hubs on 3,500 lb. Axles)
Nev-R-Adjust Brakes
Spare Tire & Wheel
Rear Ramp with Tail Doors – Straight Load
60/40 Full Height Rear Doors - Slant Load
Escape Door at 1st Stall - Slant Load 3 or More Stalls
Collapsible Rear Tack with Saddletree - Slant Load
Removable Rear Center Post - Slant Load
Divider(s) and Post(s) are Removable - Straight Load
Stall Walls Lined & Insulated Full-Height
Two-Way Roof Vent – Per Stall
Round Tubular Aluminum Radius Stall Dividers
8" Tall Padded Breast Doors with Slam Latch - Straight Load
Hands Free Slam Latch on Each Divider - Slant Load
Huge 32 x 26 Drop Down Feed Windows with Center Latch and Independent Face Guards - Slant Load
One Light per Stall with Remote Switch & One Load Light








LIVING QUARTER STANDARD SPECIFICATIONS

7' or 8' Wide, 7'6" Tall & 40" Stalls
Two-Speed Manual Jack
Side Mangers – Standard on 8' wide
LQ Prep: A/C Prep, Camper Door with Screen, Flip-Up Camper Step, Egress Window, Picture Window, Kitchen Window (where applicable), and Walk Thru Door.

POPULAR CHASSIS OPTIONS

Awning
Stainless Steel Nose
Graphics Package
Line & Insulate Ceiling in Horse Area
Drop Down Feed Window in Escape Door ILO
Bus Window - Slant Load
Roll Formed Mill Finished Aluminum Exterior at Stall Area
Running Boards
Nose Windows – Bumper pull
Window in Bulkhead - Straight Load Dressing Room Models

Optional Skin Color Choices

 Black
 White (standard)
 Champagne Beige
 Light Pewter
 Medium Charcoal Gray
 Victory Red
 Chevy 47 Green



QR Code Link to Website

For more information, please visit our website at:

www.merhow.com

Your Authorized Merhow Dealer:



306 Depot Street - Bristol, IN 46507
Ph: (574) 848-4445 - Fax: (574) 848-1112
800.860.9198

Production information and photography are as accurate as possible at the time of production. Colors and finishes are photographic representations and may appear different when actually viewing materials and finishes. Some features shown are optional, prices and specifications are subject to change without notice.