

# OPTIONS



SEMI INDUSTRIAL CHUTE WITH TWO DEFLECTORS\*



SEMI INDUSTRIAL CHUTE WITH TWO CURVED DEFLECTORS PULL TYPE SNOWBLOWER\*



TELESCOPIC INDUSTRIAL CHUTE (EXTENSION OF 28")\*

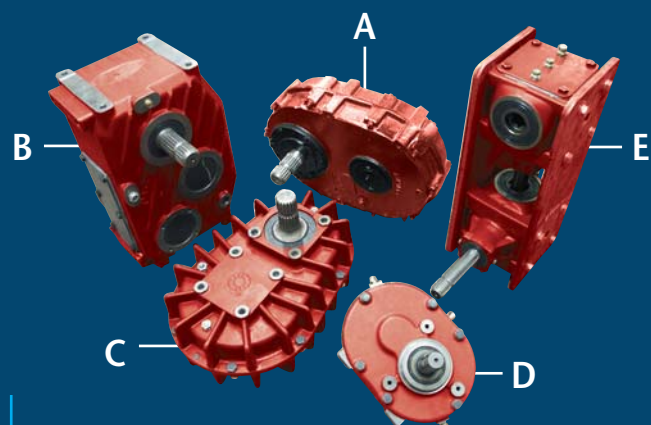


CHUTE WITH QUICK ATTACH BASE MECHANISM\*



24" & 48" CHUTE EXTENSION WITH QUICK ATTACH BASE MECHANISM\*

\* WITH GREASABLE ARTICULATIONS



### REDUCER GEAR BOX 1 000 @ 540 RPM

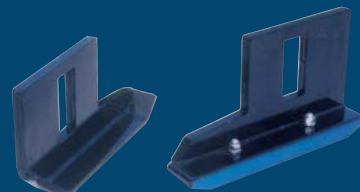
- A. 100 h.p. 3 chains      1 3/8" - 6 or 1 3/4" - 20 splines    8" c.c. shaft (1)
- A. 150 h.p. 5 chains      1 3/4" - 20 splines                            8" c.c. shaft (1)
- B. 200 h.p. 3 gears        1 3/4" - 20 splines                            10" c.c. shaft (1)
- C. 150 h.p. 2 gears        1 3/8" - 6 or 1 3/4" - 20 splines    6,75" c.c. shaft (2, 3)
- C. 75 and 85 h.p. 2 gears    1 3/8" - 6 or 1 3/4" - 20 splines    4,85" c.c. shaft (2, 3)

### REVERSER GEAR BOX 540 @ 540 RPM

- C. 150 h.p. 2 gears        1 3/8" - 6 or 1 3/4" - 20 splines    6,75" c.c. shaft (2, 3)
- C. 75 and 85 h.p. 2 gears    1 3/8" - 6 or 1 3/4" - 20 splines    4,85" c.c. shaft (3)

### ADJUSTABLE SKID SHOES:

- CARBON STEEL
- STAINLESS STEEL
- HARDOX 400
- TIVAR 88
- POLYETHYLENE UHMW



### REVERSIBLE BLADE:

- CARBON STEEL (Reversible)
- STAINLESS STEEL (Reversible)
- HARDOX 400 (Reversible)
- TIVAR 88
- POLYETHYLENE UHMW



### REVERSER GEAR BOX ratio 3,58 : 1 - 5,9 : 1

(for snowblower mounted in front of the tractor)

- D. 30 h.p. gears                    1 3/8" - 6 splines                    3,11" c.c. shaft (3)

### TRANSFER GEAR BOX (from back to front of the tractor) 540 @ 540 RPM

- E. 100 to 150 h.p. gears    1 3/4" - 20 splines                    10" and +, c.c. shaft
- E. 30 to 70 h.p. gears        1 3/8" - 6 splines                    8" and +, c.c. shaft
- E. 30 h.p. gears                1 3/8" - 6 splines                    9" and +, c.c. shaft

- (1) not reverser
- (2) reverser
- (3) others ratios available



**Normand Co. Ltd**  
340, Tache Street  
Saint-Pascal (Quebec)  
Canada G0L 3Y0

Phone: (418) 492-2712  
1-888-666-7626  
1-888-6NORMAN  
Fax: (418) 492-9363

E-mail: normand@ciernormand.com  
Web site: www.ciernormand.com



DEALER



S N O W B L O W E R S



Quality - Sturdiness - Reliability

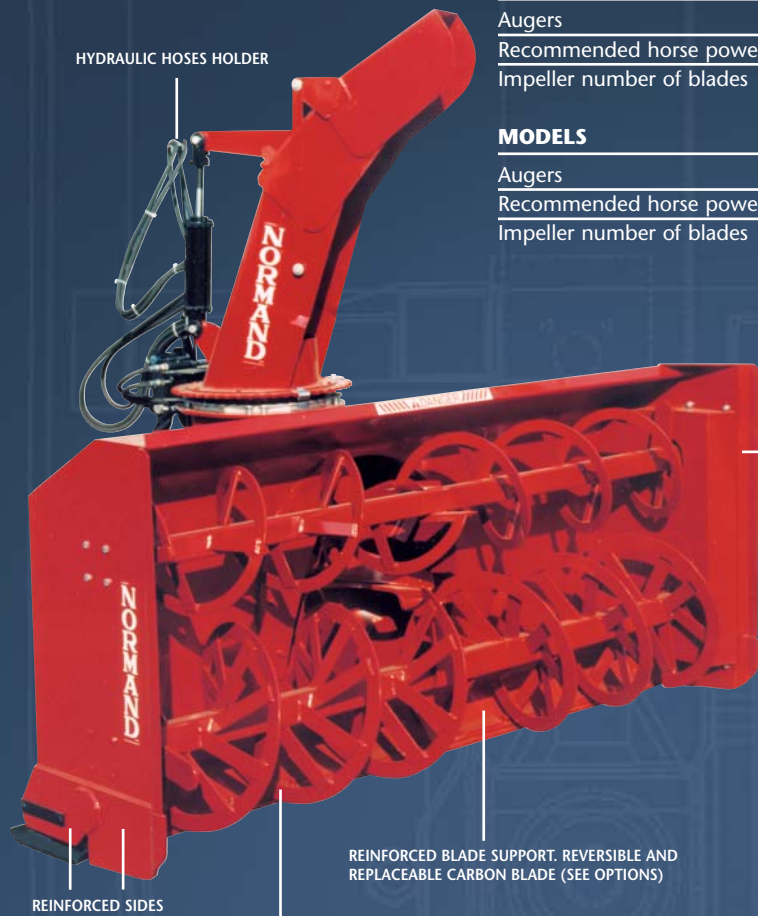
Printed Canada ©2010 Em-Communication Inc. (819) 472-8249

## Pull Type snowblowers

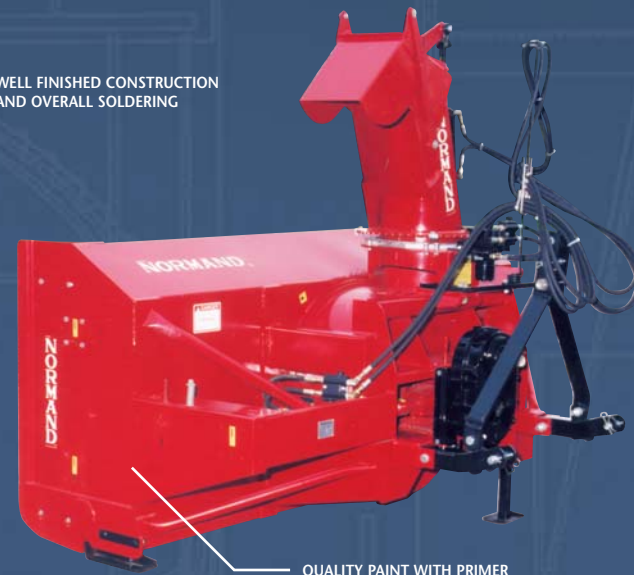
### SPECIFICATIONS

MODELS	N74-262	N86-282	N86-282TR	N92-312	N92-312TR
Augers	1	2	2	1 or 2	1 or 2
Recommended horse power	50 @ 75	60 @ 85	60 @ 85	85 @ 120	85 @ 120
Impeller number of blades	4	4	4	5	5

MODELS	N98-312	N98-342	N98-342TR	N104-342	N104-342TR
Augers	1	1 ou 2	1 ou 2	1 ou 2	1 ou 2
Recommended horse power	85 @ 120	100 @ 150	100 @ 150	100 @ 150	100 @ 150
Impeller number of blades	5	6	6	6	6



WELL FINISHED CONSTRUCTION AND OVERALL SOLDERING



QUALITY PAINT WITH PRIMER



THE "PULL TYPE" SNOWBLOWER IS MADE FOR A SPECIAL USE. CONTRACTORS WHO CARE ABOUT EFFICIENCY AND FOR A RAPID CLEARING PREFER THIS TYPE OF EQUIPMENT.

	PULL TYPE (1 AUGER)			
MODEL	N74-240 INV	N92-260 INV	N92-280 INV	N102-310 INV
Recommended horsepower (HP)	25@40	50@75	60@85	85@120
Cutting width	74"	92"	92"	102"
Cutting height	30"	32"	32"	37 1/4"
Impeller RPM	540	540	540	540
Impeller diameter	24"	26"	28 1/2"	31"
Impeller depth	9"	11"	12"	13 1/2"
Number of blades	4	4	4	5
Impeller shaft diameter	1 9/16"	1 9/16"	1 9/16"	2"
Balanced impeller	Std	Std	Std	Std
Drum center height	15 1/2"	18 1/2"	19	20 1/2"
Removable rotary drum	-	-	-	-
Cylinder size	2" X 4"	2 1/2 X 8"	2 1/2 X 8"	2 1/2 X 8"
Length closed	14 3/4"	20 1/4"	20 1/4"	20 1/4"
Manual deflector	Std	Std	Std	Std
Hydraulic deflector	Opt.	Opt.	Opt.	Opt.
Hoses holder	Std	Std	Std	Std
Semi-ind.chute (2nd deflector)	Opt.	Std	Std	Std
Main auger diameter	17"	17"	20"	22"
Balanced auger	Std	Std	Std	Std
Reversible carbon steel blade	Std	Std	Std	Std
Reversible carbon Hardox 450 blade	Opt.	Opt.	Opt.	Opt.
Reversible carbon Stainless blade	Opt.	Opt.	Opt.	Opt.
Tivar blade	Opt.	Opt.	Opt.	Opt.
Adjustable skid shoes	Std	Std	Std	Std
Hardox 450 skid shoes	Opt.	Opt.	Opt.	Opt.
Stainless skid shoes	Opt.	Opt.	Opt.	Opt.
Tivar skid shoes	Opt.	Opt.	Opt.	Opt.
Storage foot	Std.	Std.	Std.	Std.
Drive chain number	60	80	80	80
Number of safety bolts	2	2	2	3
Bearing-ductile iron casing	Std	Std	Std	Std
(P.T.O. std) shaft 1000/540 RPM reducer	No 4	No 6	No 6	No 8
Cushion valve	-	-	-	-
Hitch category	1	2	2	2
Weight(lbs) approx.-1 auger	836	1500	1850	2100



OFFERED AS AN OPTION, A REAR HYDRAULIC BLADE (AVAILABLE WITH TIVAR OR RUBBER BLADE) IS MADE FOR A BETTER CLEANING AND FOR THE PROTECTION OF DIFFERENT KIND OR PAVEMENT.



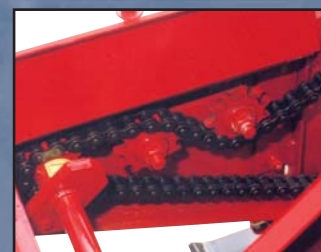
CHUTE ROTATION ON POLYETHYLENE UHMW TO AVOID FRICTION AND ICE ACCUMULATION



ADJUSTABLE CARBON STEEL SKID SHOES (SEE OPTIONS)



HYDRAULIC MOTOR DRUM ROTATION WITH GEAR AND CUSHION VALVE



SAFETY BOLT ON DRIVING SHAFT 2 SPROCKETS - ONE WITH SPRING AND ONE ADJUSTABLE



REMOVABLE ROTARY DRUM WITH TWO POLYETHYLENE BEARINGS (FRONT AND BACK) FOR EASY MAINTENANCE



PTO PROTECTOR

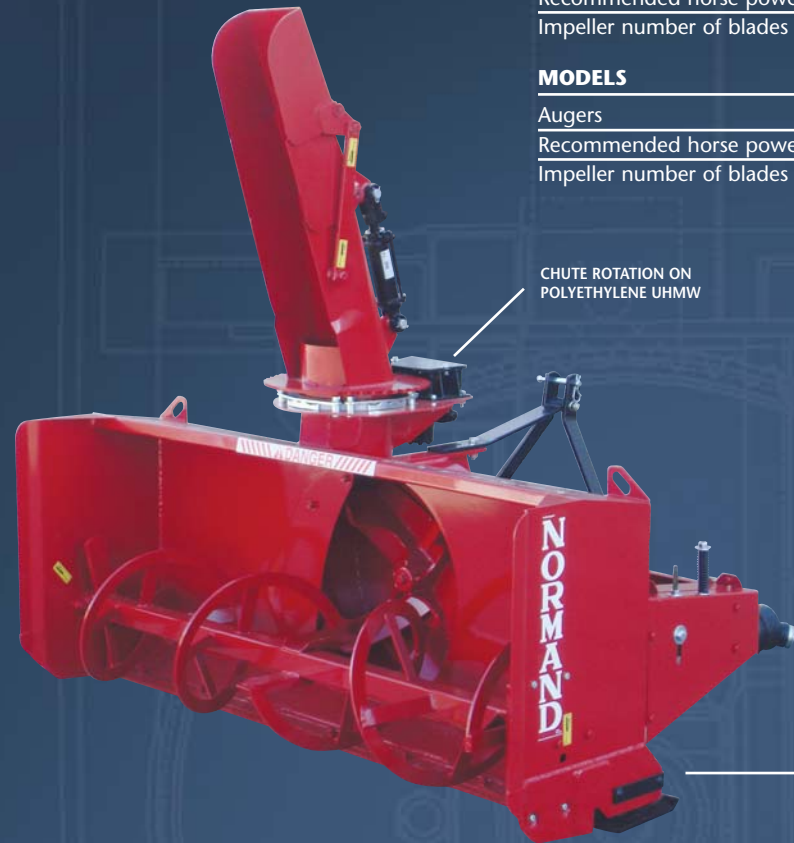
Specifications are subject to change without notice. The weight does not include accessories.

MODELS	N54-220	N60-220	N68-240	N68-240TR
Augers	1 AUGER			
Recommended horse power	20 @ 25	20 @ 25	25 @ 40	25 @ 40
Impeller number of blades	4	4	4	4

MODELS	N74-240	N74-240TR	N74-260C	N82-260C
Augers	1 AUGER			
Recommended horse power	25 @ 40	25 @ 40	40 @ 65	40 @ 65
Impeller number of blades	4	4	4	4

MODELS	N74-260	N74-260TR	N80-260	N80-260TR	N86-260	N86-260TR	N86-280
Augers	1 auger only (LP)						
Recommended horse power	40 @ 75	40 @ 75	45 @ 75	45 @ 75	50 @ 75	50 @ 75	60 @ 85
Impeller number of blades	4	4	4	4	4	4	4

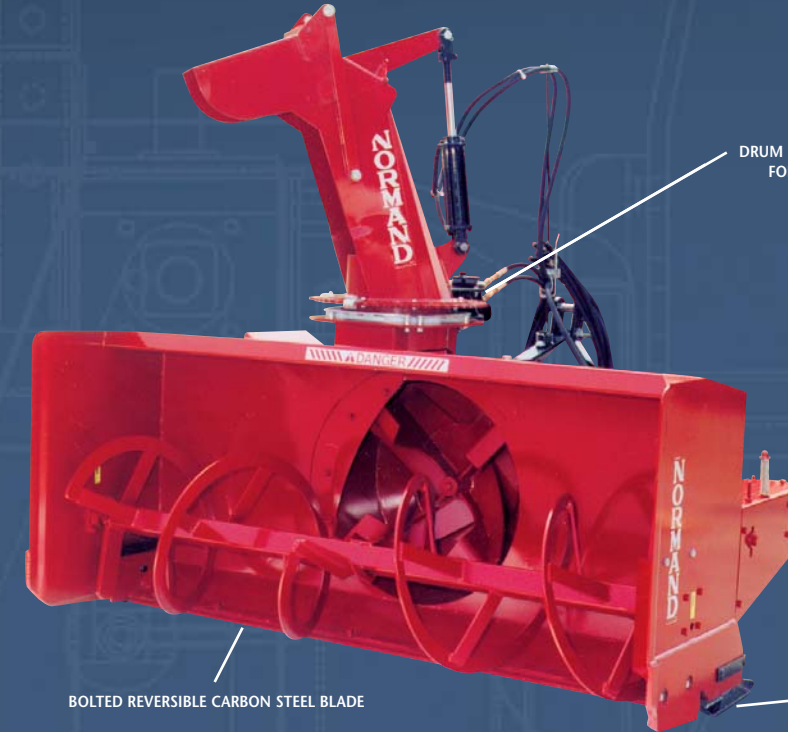
MODELS	N86-280TR	N92-280	N92-280TR	N92-310	N98-280	N98-310	N98-340
Augers	1 auger only (LP)						
Recommended horse power	60 @ 85	75 @ 120	75 @ 120	85 @ 120	75 @ 120	85 @ 120	100 @ 150
Impeller number of blades	4	4	4	5	4	5	5



CHUTE ROTATION ON POLYETHYLENE UHMW



QUALITY PAINT WITH PRIMER



DRUM EXIT / FULL ROUND CHUTE FOR BETTER EVACUATION



ADJUSTABLE SKID SHOES CARBON STEEL

## SIDEWALK SNOWBLOWERS

50 @ 75 HP

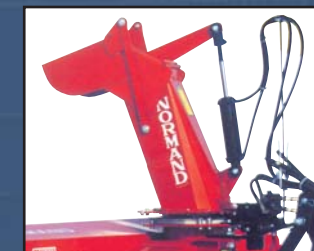
MODELS	N54-262	N60-262
Augers	2	2
Recommended horse power	50 @ 75	50 @ 75
Impeller number of blades	4	4



STRONGER STURDINESS



STORAGE FOOT



HYDRAULIC HOSES HOLDER



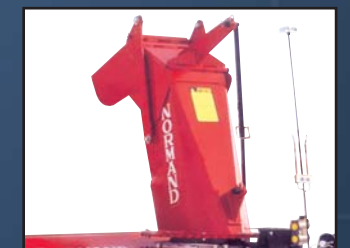
BALANCED IMPELLER, VERY STRONG : 4 OR 5 BLADES



SIDE GREASE FITTING BEARINGS DUCTILE IRON CASING ON ALL MODELS



HYDRAULIC CHUTE ROTATION WITH GEARS, MOTOR AND CUSHION VALVE



CHUTE DEFLECTOR WITH TELESCOPIC ROD STANDARD

BOLTED REVERSIBLE CARBON STEEL BLADE

