

BID SPECIFICATIONS

B26 Loader / Landscaper Utility Tractor (Updated July 31, 2008)

ENGINE	
Make and Model	Kubota, D1105, Interim Tier IV s/n 52091 ~
Type	Liquid Cooled, 3 cylinder diesel E-TVCS indirect injection Tier II complaint diesel engine
PTO hp	19.5 hp (14.5 kW) @ 2800 rpm
Engine hp (gross)	26.0 hp (19.4 kW)
Engine hp (net)	23.3 hp (17.4 kW)
Bore and Stroke	3.1" x 3.1" (78 mm x 78.4 mm)
Displacement	68.5 cu in (1123 cc)
Lubrication	Forced lubrication
Cooling System	Forced flow, pressurized radiator with pre-cleaner screen
Radiator Fan	Radial airflow
Air cleaner	Dual element, dry paper
Governor	Weight type governor
Injection Pump	Inline fuel injection piston pump with self bleeding fuel system
Fuel Filter	Replaceable cartridge type fuel filter
Oil Filter	Spin on oil filter cartridge
Muffler	Enclosed spark arrestor muffler
Engine compartment	Fully enclosed and screened engine compartment with easy access hood
Throttle	Hand control, right side-mounted for loader and / or backhoe operation
Fuel Shutoff	Key switch activated engine stop mechanism
CAPACITIES	
Fuel Tank	31 liters
Cooling System	4.5 liters
Engine Oil	3.0 liters
Transmission and Differential	26 liters
Front Differential Case	4.7 liters
DRIVE TRAIN	
Front Axle	Heavy duty, 4 wheel drive
Type	Bevel gear cast iron, single piece front axle with fixed tread spacing
Input shaft type	Spline shaft power transfer from transmission, fully enclosed
Transmission	Hydrostatic transmission
Speed Range	3 Range
Differential Lock	Rear axle, mechanical, left heel engagement pedal
Final Drive	Spur gear, flange type
Brakes	Wet disc with lockable steering pedals
Frame	A reinforced integral main frame absorbs twisting loads during loader and backhoe operation
PTO SYSTEM	
Type	Hydraulic, Independent, rear
	540 rpm @ 2768 rpm, 1 3/8" SAE, clockwise rotation
PTO Shield	Flip-up type standard equipment

BID SPECIFICATIONS

B26 Loader / Landscaper Utility Tractor (Continued)

HYDRAULICS	
System	Open Center
Pump Type	2 x Gear
Total Output	11.2 gpm (42.3 L/min)
Main Pump Output	7.0 GPM (26.3 L/min) @ 2400 psi
Power steering	4.2 gpm (16.0 L/min)
Tractor Rear Remote / optional	7.0 GPM (26.3 L/min)
Loader 3 rd Function / optional	7.0 GPM (26.3 L/min)
Backhoe Service Port / optional	7.0 GPM (26.3 L/min)
Filter	Spin-on, treated paper element
3-Point Hitch	Category I
Position Control	Hydraulic, single lever, right side-mounted
Lift Capacity: At Lift Points	2139 lbs (970 kg)
24" Behind L.P.	1676 lbs (760 kg)
Steering	Integral, hydrostatic power steering. Easy-step tilt steering wheel, 3-positions
ELECTRICAL	
Battery (Maintenance Free)	12 VDC, 433 CCA
Alternator	12 VDC, 40 amp
Engine shut-off	Electric key shut-off
Cold temperature starting aid	Glow plugs for cold weather starts CSA approved block heater (option)
Instrument panel	Tachometer, coolant temperature gauge, fuel gauge, hour meter, Back lighted for viewing ease day or night.
Indicator lights	Engine oil pressure, battery charge, glow plugs indicator
Lights	Two front work lights, Two rear work lights, ROPS mounted turn signals / 4-way flashers
COOLING SYSTEM	
Radiator	Heavy duty pressurized radiator with reserve tank and pre-cleaner screen
Air flow type	Radial air flow with suction fan
Cooling system	Water pump, Pressurized forced-circulation
SAFETY EQUIPMENT	
ROPS / FOPS	Four-post ROPS certified OSHA 1926.1002 / 1926.1003 FOPS certified OSHA 1926.1003 with retractable seat belt
Safety Start System	Standard equipment
Operator Presence Controls	Standard equipment
Operator's Seat	Reversible seat, spin in place
Operator's Manual Storage	Standard equipment
Engine Throttle From Backhoe Position	Standard equipment
Parking Brakes	Standard equipment
Grab Handles for Entry / Exit	Standard equipment
Non-slip Entry / Exit Surfaces	Standard equipment
High Visibility Paint	Standard equipment
Slow Moving Vehicle Sign	Standard equipment
Lights	Two front work lights, Two rear work lights, ROPS mounted turn signals / 4-way flashers

BID SPECIFICATIONS

B26 Loader / Landscaper Utility Tractor (Continued)

DIMENSIONS

Height to top of ROPS		89.5" (2273 mm)
Length (including loader & backhoe)		198.2" (5035 mm)
Overall Width (rear axle)		53.7" (1365 mm)
Wheelbase		62.2" (1581 mm)
Turning Radius (without brake)		8.2' (2.5 m)
Turning Radius (with brake)		6.6' (2.0 m)
Tire Size – Standard	Front	23 x 8.50 – 14 R4 Ind
	Rear	12.4 – 16 R4 Ind
Tread Width	Front	35.6" (905 mm)
	Rear	41.3" (1050 mm)
Weight: B26TL		3,141 lbs (1425 kg)
	B26TLB	4,001 lbs (1815 kg)
Ground Clearance (With Std. Tires)		13.8" (350 mm)

TRAVELING SPEEDS (With standard industrial tires)

Range	Low		Medium		High	
	Km/h	MPH	Km/h	MPH	Km/h	MPH
Forward	0 – 4.5	0 – 2.8	0 – 8.4	0 – 5.2	0 – 17.8	0 – 11.1
Reverse	0 – 4.0	0 – 2.5	0 – 7.4	0 – 4.6	0 – 15.8	0 – 9.8

TIRES

STANDARD TIRES - INDUSTRIAL

Front	23 x 8.50 - 14 R4 Industrial
Rear	12.4 - 16 R4 Industrial

OPTIONAL TIRES - Turf

Front	24 x 8.50 - 14 Turf tire
Rear	13.6 x 16 Turf Tire

OPTIONAL TIRES – Ag.

Front	23 x 8.50 - 14 R4 Industrial
Rear	12.4 - 16 R1 Ag.

OTHER

Instruction Identification	Permanently installed English instructions, diagrams and warning decals, to ensure operation and servicing with maximum safety.
Manuals	One operator's manual included with unit. Parts and Service manuals are available through Kubota.
Note	The company reserves the right to change specifications without notice.
Warranty	Basic: 12 months, No hour limit
	Extended Powertrain: 24 months or 1500 hours

BID SPECIFICATIONS

TL500 LOADER

Slanted Boom Design	Follow the profile of the tractor, improve visibility		
Enclosed Hydraulic Hoses	Improved visibility and durability		
High Performance Control Valve	Built-in right side consol, greater control, productivity		
Control Valve Type	One detent float position, power beyond circuit		
Auto-Leveling Mechanism	Mechanical spill guard		
Quick Attach System	Skid Steer type quick coupler		
Front Grill Guard	Standard		
Lift capacity to max height at bucket bottom mid point	1102 lbs (500 kg)		
Lift capacity to max height at pivot pin	1300 lbs (590 kg)		
Breakout force at pivot pin	2344 lbs (10417 N)		
Maximum lift height to pivot pin	94.5" (2400 mm)		
Clearance with bucket dumped	70.0" (1778 mm)		
Reach at maximum height	22.3" (567 mm)		
Maximum dump angle	45 degrees		
Reach with bucket on ground	61.5" (1561 mm)		
Bucket rollback angle	46 degrees		
Digging depth	7.0" (177 mm)		
Overall height in carrying position	49.5" (1258 mm)		
Hyd. Flow, 3 rd Function Valve (Optional)	7.0 GPM		
Net Weight of TL500	628 lbs (285 kg)		
Cycles Time (Seconds)	Raising time	3.6	
	Lowering time	2.4	
	Bucket dumping time	1.8	
	Bucket rollback time	3.4	
OPTIONAL EQUIPMENT:		<ul style="list-style-type: none"> •60 & 66" loader buckets •60 & 66" bolt on cutting edge •3rd function valve •Bale spear •Pallet fork 	
LOADER BUCKET ALTERNATIVES:			
Model	Heavy Duty Round Back 60"	Light Material Round Back 66"	
Type	Quick Attach, Skid Steer Type	Quick Attach, Skid Steer Type	
Width	60" (1524)	66" (1676)	
Depth	17.8" (453 mm)	24.5" (623 mm)	
Height	23.0" (584 mm)	23.0" (584 mm)	
Length	25.4" (646 mm)	32.1" (816 mm)	
Capacity	Struck	7.8 cu-ft (0.22 m3)	11.3 cu-ft (0.32 m3)
	Heaped	9.5 cu-ft (0.27 m3)	13.8 cu-ft (0.39 m3)
Weight	278 lbs (126 kg)	328 lbs (149 kg)	

BID SPECIFICATIONS		
BT820 & BT820V BACKHOE		
Quick Attach Backhoe	4-point rigid mount / quick connect. Exposes Cat I 3-point hitch for implement operation. Linkage stored on machine.	
Curved Boom	Clears obstacles, improves spoil placement	
Enclosed Hydraulic Hoses	Improved visibility and durability	
High Performance Inching Valves	Greater control, productivity. Sound level reduced	
Compact Valve Cover	Greater visibility, operator's space	
Seat	Common seat for tractor, loader and backhoe operation	
Engine Throttle For Backhoe Operation	Common throttle for backhoe and loader operation, located on operator's left side when in backhoe seating position	
Boom Swing Mechanism	Trunion, Twin Cylinder	
Digging Force Using Bucket Cylinder	4211 lbs (18731 N)	
Digging Force Using Dipper Stick Cylinder	2123 lbs (9444 N)	
Transport Height	89.1" (2264 mm)	
Stabilizer Spread, Transport	53.0" (1347 mm)	
Stabilizer Spread, Operating	83.3" (2116 mm)	
Ground Clearance	11.3" (287 mm)	
Overall Width	53.7" (1365 mm)	
Digging Depth, Maximum	99.8" (2535 mm)	
Digging Depth, 2 Ft. Flat Bottom	98.3" (2498 mm)	
Digging Depth, 8 Ft. Flat Bottom	77.0" (1957 mm)	
Operating Height Fully Raised	129.8" (3298 mm)	
Loading Height	77.3" (1963 mm)	
Loading Reach	52.1" (1324 mm)	
Reach From Pivot Point	133.9" (3400 mm)	
Swing Pivot to Rear Axle Centerline	33.7" (855 mm)	
Bucket Rotation	181.2 degrees	
Leveling Angle	10.7 degrees	
Swing Arc	180 degrees	
Angle of Departure per SAE J1234	20.3 degrees	
Auxiliary Hydraulic Valve (Std on BT820V)	7.0 GPM	
Net Weight of BT820 with 18" bucket	860 lbs (390 kg)	
Cycles Time (Seconds)	Boom cylinder, extend	4.1
	Boom cylinder, retract	3.0
	Swing cylinder, from 90° to center	1.5
	Dipperstick cylinder, extend	4.0
	Dipperstick cylinder, retract	3.0
	Bucket cylinder, extend	3.2
	Bucket cylinder, Retract	2.2
	Stabilizer cylinder, max height to ground	2.5
	Stabilizer cylinder, ground to max. height	1.7
OPTIONAL EQUIPMENT:	<ul style="list-style-type: none"> •Pin-on buckets - 12", 18", 24" •Quick attach buckets – 12", 18", 24" •Backhoe Stabilizer Flip Pads/Rubber •Remote valve kit for backhoe (Standard on BT820V) •Hydraulic Thumb 	

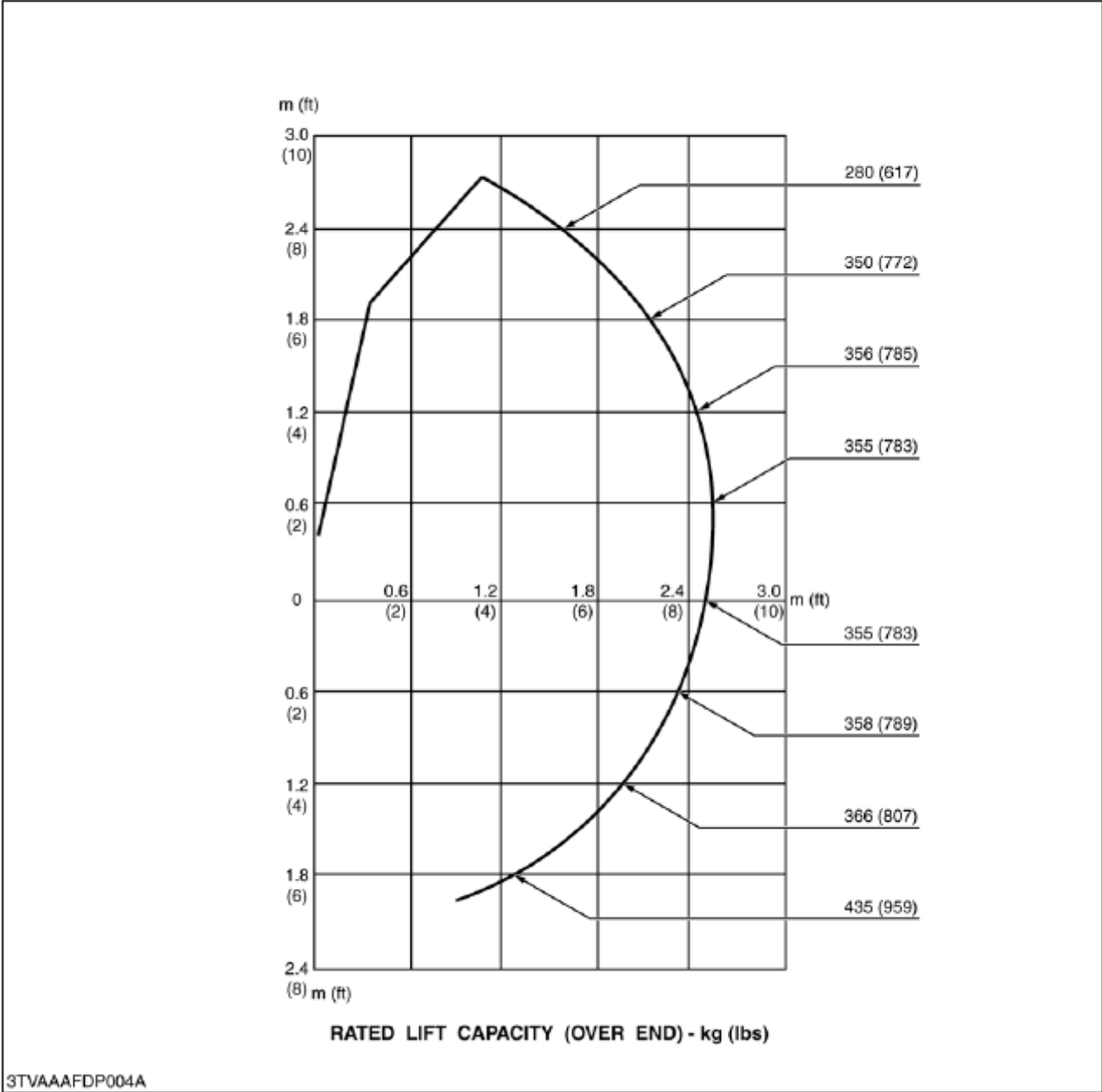
BID SPECIFICATIONS

BT820 & BT820V BACKHOE (Continued)

BACKHOE BUCKET ALTERNATIVES:

Model	SAE Struck Capacity cu-ft (m3)	SAE Heaped Capacity cu-ft (m3)	Number of Teeth	Weights lbs (kg)
Trenching 12"	0.85 (0.024)	1.10 (0.031)	3	84 (38)
Trenching 18"	1.34 (0.038)	1.84 (0.052)	4	92 (42)
Trenching 24"	1.87 (0.053)	2.61 (0.074)	5	106 (48)

■ Lift Capacity (Per SAE J31)



3TVAAAFDP004A

Lift capacities shown are 87 % of maximum lift force, according to SAE definition.